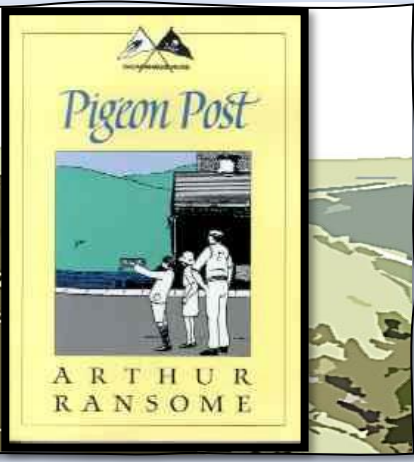


MIDLAND TARS IAGM  
*HIGH TOPPS IN THE*  
 DERBYSHIRE PEAKS  
 AUGUST 15<sup>TH</sup>-18<sup>TH</sup> 2024



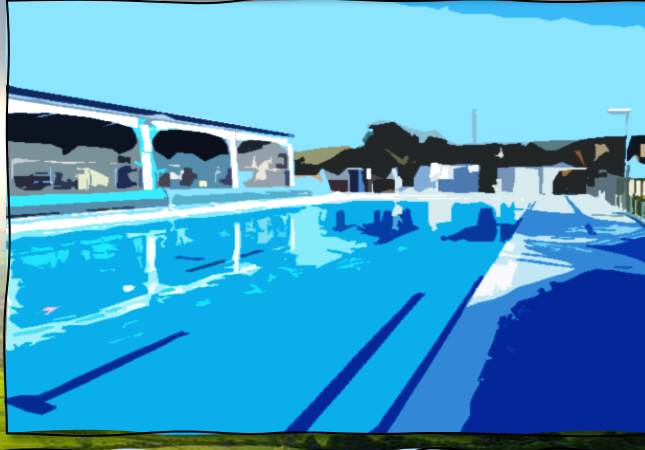
Full Board and Lodgings available at  
*The Nightingale Centre, Great Hucklow*

A watery day at Combs Reservoir



'Camp Might Be' - possible adjacent camping field ...

Stroll or hike hills, dales, and ridge edges around the *Dark Peak*. Sail, swim, catch a train. See 1,000 shades of green, take a tour of a stately home. Tour caverns. Go 'prehistoric' prospecting for edible gold. Hear fascinating, illustrated talks. Join in with quizzes and feasts of fun!



Take a cooling dip in Hathersage Outdoor Pool.

# SOMETHING FOR ALL OF US ...



## Breathing Life into History ...

### Three Illustrated Talks

#### Literary Derbyshire, Martha Blue



Thinking of following the Jane Eyre Trail? Know your Jane Austen from your Agatha Christie? What have Just William, Bruce Bogtrotter, Robinson Crusoe, Little Grey Rabbit, Celia Fiennes, Charles Cotton, George Eliot, D.H. Lawrence, Samuel Johnson, John Ruskin, Edith Sitwell et al have in common? An eclectic literary presentation!

#### A Girl Afloat – from water baby to narrow-boat, Jenny Wedick

Jenny Wedick will take us on a meandering whistle-stop journey, charting her childhood watery experiences through to her interest in the Nancy Blackett, the Jubilee Sailing Trust and up-to-date narrow-boating adventures!

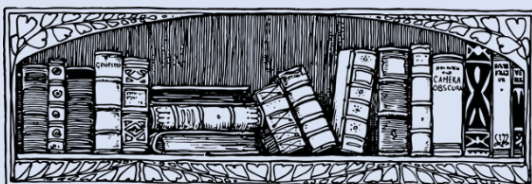
#### Yes, I met Ransome once, Peter Wright

Arthur as seen and described by those who met him, from being 'a very ugly child' to 'a furiously bad-tempered old man'. Discover who described him as 'a Don Quixote with a walrus moustache, a sentimentalist, visionary and incorrigible romanticist', or 'amateurish, literary, opinionated, conceited and eccentric', but also an 'amusing and good-natured companion'!

Music Group. Join a shanty band - entertain us with your instrumentals. Sign up on the Booking form!



Susan Cup! Bring along a pre-made, Pigeon Post-themed bake creation to be judged by Jenny Wedick.



TARS Stalls & Library



Chess Tournament

*Scouts at Dusk* – local woodlands scavenger hunt

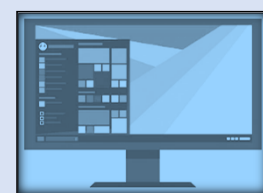
Ted Alexander's AR display



Sunday Worship Service kindly led by the Hambleton family.

Dick Callum Cup & Juniors' Swallows and Amazons Cup! Get quizzing!

*News From the Wilderness* – A Juniors Challenge to create a scrapbook/diary/journal over the weekend. Prize of a Carnegie Medal-winning book for the most illustrative and detailed. Judged by Jules Blue



*Pioneers & Stay-at-Homes* - AGM and Members' Forum (Also hoped to be Zoom-fed)

## Being Swallows, Amazons & Ds



SLATER BOB TALKS OF GOLD

At the Nightingale Centre, seek out *The Gulch* where Slater Bob will oversee some super fun activities and challenges which our Committee have designed.

Participate or spectate!

Juniors must bring along at least one AP. Unattached APs may bring themselves.

### Rattletrap Racing!

Build a junk model *Rattletrap* and win a prize for the closest replica of AR's vintage version.

Race your *Rattletrap* down a slick ramp to win a further prize for the furthest travelling vehicle.

Spectate or support your favourite engineer!

### Finding Timothy!

A weekend-long *Cluedo*-style game to discover the real Timothy in time to stop him from jumping the TARS gold claim! Follow the clues and question suspects ...



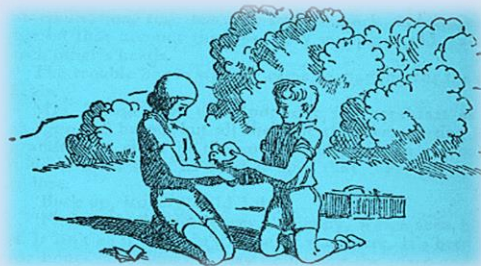
### Crushing & Panning - & archery!

Using bows & arrows, send messages to your team members. Follow this with panning & sorting raw ores to discover grains of gold. All ages welcome!



### Pigeon Post!

Using a vortex-ball-based design, send and receive semaphore messages within your team. Will your letters fly faster than anyone else's?



*We've Got to do it all Ourselves.* Garden games – Badminton/Quoits/ Pick-a-stick/Kubb/Connect Four/Boules ...

### Pigeon Post Tapestry

Help to illustrate *Pigeon Post*. A wall-mounted, DIY illustration, fleshing out the book chapters.

### *Shifting Camp* by way of vintage 'dromedaries.'

Set up a make-shift camp then pack it up again and move it swiftly to another site using a vintage 'dromedary' bicycle. Play alone or join a team or just come along to watch this hilarious race. All ages welcome!

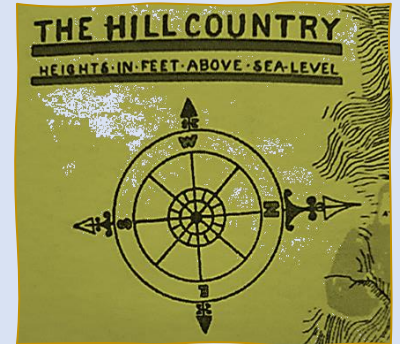


### *Charcoal Pudding* food challenge!

Create something visibly-delicious and edible out of something very dark!

Prize given for most original, judged by Mike Glover

**TAKE IN A FEW PEAKS, OR TAKE A FRIDAY PEEK ...**



**THORNBRIDGE HALL: TARS HOUSE TOUR @2pm (50 minutes)**

'Nice & handy to the house'... Wander through a thousand shades of green at quirky and quintessentially English Thornbridge Hall. Graceful gardens manipulate the landscape in a series of themed 'garden rooms.' Temples, urns, statues, grottos. Juniors may wish to *meet the animals* or meander around willow tunnels or net a duck in the high fountain.

House tour: £12 pp or House tour and afternoon cream tea £15pp

(Garden tickets available, payable on day: £3 under 17/£7 17+)

\*Tours suitable for age 12+ \*\* Tour – many stairs, therefore unsuited for you with limited mobility

Nightingale Centre to Thornbridge Hall 6 miles/12 mins

Thornbridge Hall to Castleton 12 miles/25 mins

**'Combing the Topps'**

***DARK PEAK 'EDGES-AND-RIDGES' CIRCULAR SIX COUNTRY-MILE STROLL***

Guided circular ramble along rugged gritstone tors and escarpments of Curbar & Frogatt Edges with striking rock formations amid panoptic views over rolling Derbyshire Dales moorland countryside. (862-958 feet above sea level)

Gather 10:15. Walk 11-3:00

Parking 6.7 miles/15 mins from Nightingale Centre

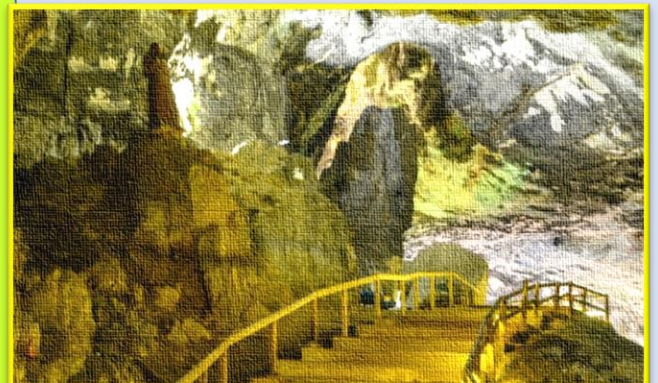


**'Squashy Hat comes out of the hill ...'**

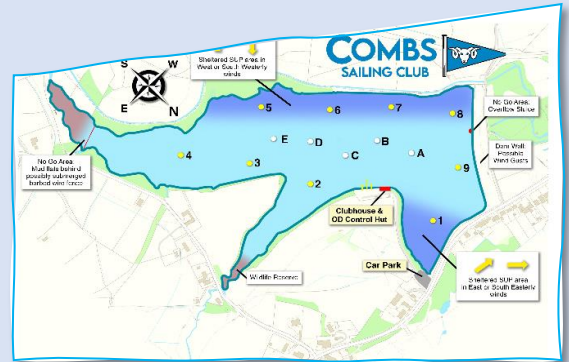
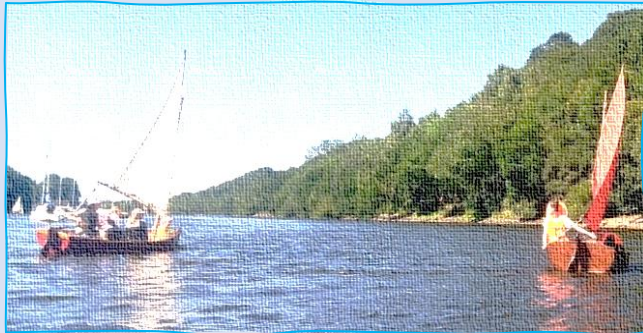
**PEAK CAVERN, CASTLETON, 4PM**

Rope-making demonstration in largest natural cave entrance in Britain, followed by show caverns tour. (A little stooping required for the loftiest. Ball of string not required!) Deep in the gorge below Peveril Castle, Derbyshire lead miners once toiled. Do you know your stalagmites from your stalactites?

Adults: £16/Juniors: £9/under 5s free



**SAILING, STROLLING OR SWIMMING – GRAB YOUR SATURDAY CHANCE!**



**Catch a six-minute train from Hope Valley Station to Hathersage! Hourly trains. Adult ticket £4.20/age 5-16 £2.10/Parking £3.00**



**SATURDAY ALL-DAY SAILING: 10-4pm**

The picturesque Combs Reservoir (11 miles/25 minutes' drive from Great Hucklow), near to Whaley Bridge, beneath the crag-fringed slopes of Combs Moss, has its own sailing club but we have secured permission to make good use of the reservoir, including parking for boats and trailers beforehand and overnight. Club house facilities, including separate male/female changing rooms, are accessible. Sail or paddle (SUPs may be made available for a donation). Play the '*White Spots*' game or '*Fend off the Enemy*'

Sailing rules will be sent out to prospective sailors and helm crew before the event.

**SATURDAY AFTERNOON STROLL: 3pm.**

**Prospecting** for edible Gold at **Carl Wark**, the Chatsworth-gritstone, flat-topped prehistoric, promontory on Hathersage Moor. Explore ramparts and defensive walls and expect wild encounters around every corner. Professor Callums and all may seek here its secret treasures and consider when it was built and who built it - & why!

Parking 8.4 miles/20 mins from Nightingale Centre



**SATURDAY SWIM: 5-6pm**

**Hathersage Outdoor Pool.** Period features, modern changing facilities & showers. Heated to 27° Grandstand seating.

**'They've Gone In'** – exclusive use. Swim or spectate. Expect *Swallows*' watery challenges! Perhaps some music from the bandstand?

Nightingale Centre to Hathersage 5.8 miles/16 mins



## ACCOMMODATING YOU IS ...



*The Nightingale Centre*

Great Hucklow



Honesty Bar available - selection of local beers, bottles of wine, etc.

The Nightingale Centre and its Unitarian links go back to the early 1930s when a convalescent home for ex-servicemen was built on the site in Great Hucklow. It replaced a more primitive building at Windmill village a mile along the road. Also in existence was a similar establishment for women, a large property called Barleycrofts. This has now been converted into three residences and is situated opposite the village chapel. It is these buildings along with an area of ancient woodland that makes up the present-day Nightingale complex.

See website for further information:  
[www.thenightingalecentre.org.uk](http://www.thenightingalecentre.org.uk)



30 bedrooms, 18 en-suite, large (10 berth) dormitory, 78 staying guests, full-board only. Rooms 26-29 ground floor. Room 30, mobility needs-adapted.

\*Day guest: Tea and Coffee and meal £45 p/p/d

Great Hucklow sits high between Bakewell, Buxton and Sheffield.

Northern Railway's Hope Valley Line runs between Sheffield and Manchester and gives direct access (spectacular scenery), with local stations at Grindleford, Hathersage, Bamford, Hope and Edale.

The Manchester to Glossop Line puts you at the foot of the Dark Peak moorlands with the grandeur of Bleaklow and Kinder Scout as backdrop.

To the west, the Manchester to Buxton Line links local buses taking you to villages and dales in the *White Peak*.

There are electric vehicle charging points in nearby Edale, Miller's Dale and Parsley Hay.

*'Camp Might Be'* - adjacent basic camping field with portaloos & water. Local B&B accommodation also available.

\* Please indicate interest in camping on booking form.

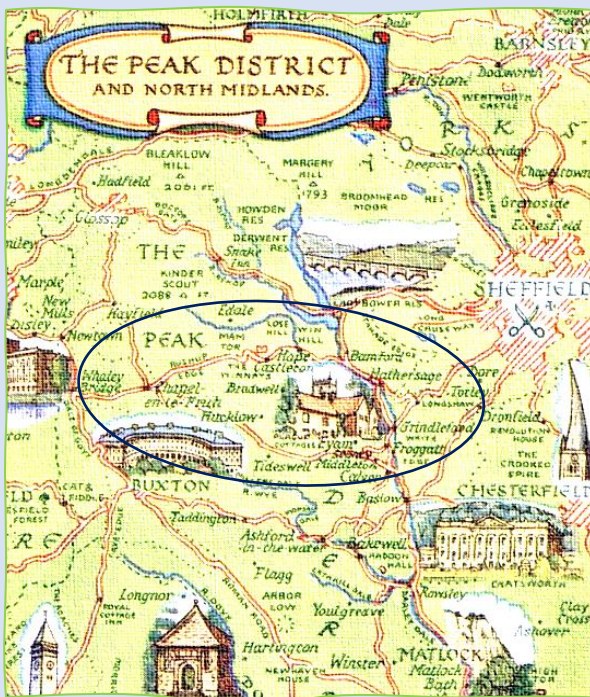
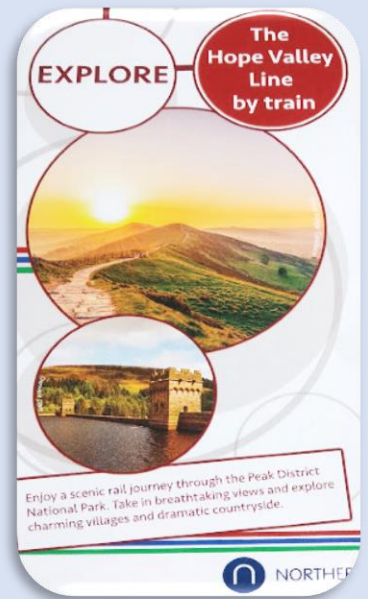
Showers available for sailors and swimmers at Combs Reservoir or Hathersage Pool on Saturday.



*'Camp Might Have Been ...'*

"To be camped within hearing of the house and its natives, no matter how friendly ... To draw water from the farm pump instead of dipping it from lake or beck ..."

**TAKE A LOCAL LOOK AROUND!** Visit the spa town of Buxton, England's highest market town, at some 1,000 feet above sea level. Here, Vera Brittain grew up. Take in the Royal Crescent Experience and see how the Georgians lived. There's the Devonshire Dome, with the world's largest unsupported dome. Or visit Scrivener's (five storey) bookshop and bookbinders, or even the Opera House!



Peakshole Water flows through Hope, where it enters the lower reaches of the River Noe, which flows from Edale; it then flows into the River Derwent. Follow the water, follow the Peak District.

Discover Britain's *first* National Park!

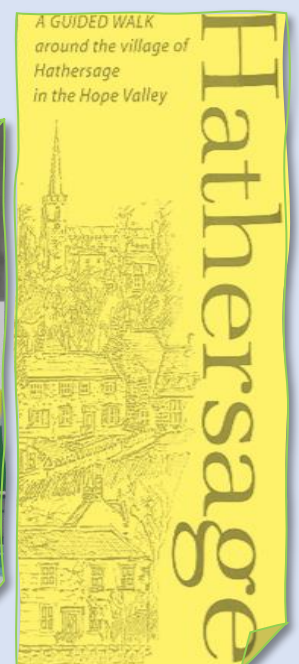
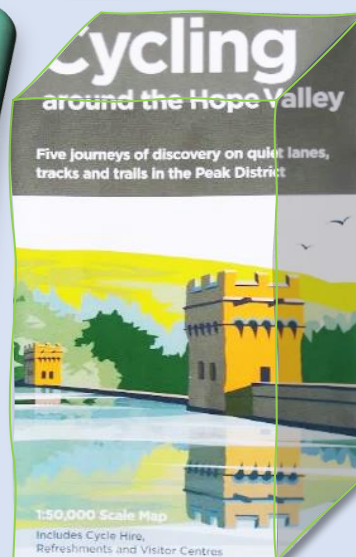


Eyam is famous for the bravery of its villagers when plague devastated the country during 1665-1666.

The museum tells the tale but offers alternative analyses too.

See also the Riley Graves, Mompesson's Well, The Boundary Stone and Eyam Church.

Local, self-guided, circular village walks available. Cafés, free parking.



**THE**

**ON-SITE  
ACTIVITIES  
AT THE  
NIGHTINGALE  
CENTRE**

**THURS AUG 15th**

Stallholders arrive >4pm

Guests arrive > 5pm

Registration/keys/  
Unpack/orientation/  
Welcome Booklet

**'Pot of Paint'** -  
Crafts available/Tars  
Stalls/Lib (5-6/7.30-9)

**Eve meal (6-7)**

**Martha's Illustrated Talk**  
**'Literary Derbyshire'**  
(7.30-8.30)

**Susan Cup Presentation**  
(8:30)

**FRI AUG 16th**

**Breakfast (7-8.30)**

**Music Group –  
Rehearsal (9-9:45)**

**'We've Got to do  
it all Ourselves'**  
**Garden Games**  
(ongoing)

**CHESS contest**  
(9:45-10:15)

**'Pot of Paint'** -  
Crafts  
available/Tars  
Stalls/Lib (10-4)

**'Being Ss/As &  
Ds'**-  
(AR activities)  
(10:30-12)

**Packed lunch**  
(12-1)

**'Being Ss/As &  
Ds'**-  
(AR activities)  
(2-3:30)

**Eve Meal (6-7)**

**DC CUP  
S&A CUP**  
(7-8:30)

**Jenny Wedick:  
'Watery Tales'**  
(8:30-10)

**Juniors'  
Challenge**  
(8:30-9:30)

**SAT AUG 17th**

**Breakfast (7-8.30)**

**Music Group –  
Rehearsal (9-9:45)**

**'We've Got to do  
it all Ourselves'**-  
**Garden Games**  
(ongoing)

**CHESS contest**  
(9:45-10:15)

**'Pot of Paint'**-  
Crafts  
available/Tars  
Stalls/Lib (10-4)

**'Being Ss/As &  
Ds'**-  
(AR activities)  
(10:30-12)

**Packed Lunch**  
(12-1)

**'Being Ss/As &  
Ds'**-  
(AR activities)  
(2-3:30)

**Eve Meal (6-7)**

**Peter Wright:  
'Yes, I Met  
Ransome'**  
(7:30-8:30)

**'Campfire Songs'**  
**Music Group**  
Juniors'  
Challenge Prizes  
(8-9:30)

**SUN AUG 18th**

**Breakfast (7-8.30)**

(Stalls pack away)

**Sunday Worship -**  
(9-9:30)

Vacate rooms by  
10

**'Pioneers & Stay-  
at-Homes'**-  
AGM/  
Members' Forum  
(10:15-12)

**CHESS contest**  
(9:45-10:15)

Treasure Hunt  
(10:30-11:30)

Trustees' Meeting  
(12-12:30)

**Lunch**  
(12-1)

**Flag Handover**  
(1:30)

Depart Centre by  
2pm

\*  
(Meal-times given  
are serving times)







# BOOKING FORM

Send your completed form to Mr Paul Green, 34 Felindre Pennal, Machynlleth. SY10 9DZ.

Payments should be made by BACS (sort code: 30-93-90 account: 00230479 ref: IAGM24 [your surname]). If needing to pay differently, please contact Paul first: [paul-midtdars@gmx.co.uk](mailto:paul-midtdars@gmx.co.uk)

## Personal Details

Please write your name and address here for contact purposes

Membership No.		First IAGM?	Yes/No
Telephone No.			
E-mail			
Vehicle Reg.			
Other Members of party (with DOB for Juniors)			

## Registration Fees

Payable on booking. Covers administrative costs and all events and activities except the visit to Peak Cavern and Thornbridge Hall.

	Price	No.	Total
Adult	£30		£
Junior (Under 18)	Free		N/A
Day visitor (Please state day)	£15	Fri/Sat/Sun	£

## Payable Activities

Sharing of lifts will arranged via the onsite information desk

	Price	Age(s)	No.	Total
Peak Cavern Ad/Jn/u5	£16/£9 /£0			£
Thornbridge Hall House Tour only	£12			£
Thornbridge Hall Tour & Cream tea	£15			£

**Totals** (half or full amount to be paid on booking, balance to be paid by 15 June)

Registration Total (payable on booking)	£
Accommodation Total	£
Activities Total	£
Late Booking Fee (after 15 June) £30	£
<b>Total due/enclosed (delete as appropriate)</b>	<b>£</b>

## Free Activities

## Number

Music Group (note instrument and approx. grade overleaf)	
Sailing (Bringing a boat as 'skipper' to take passengers/crew)	
Size of boat (inc. trailer)	Buoyancy Aids
Sailing as passenger/crew	am pm
Swimmer or spectator	
Susan Cup (Baking Competition)	
Dick Callum Cup (Quiz)	
Chess Tournament	
Prospecting for edible Gold (Treasure Hunt)	
Being Swallows & Amazons/on-site activities	
AGM & Members' Forum	
Talks: (Thurs) (Fri) (Sat)	
Guided Walk (6miles/10KM/3-4 hours)	

## Accommodation

Meals are included in Main House accommodation.

Further details of menu requirements and any special dietary requirements for your party, with names of those to which they apply, will be requested approximately 2 months prior to the event.

Full Board	PPN	Number	Total Nights	Total
Adult	£102			£
Junior (12-17y)	£50			£
Junior (6-11y)	£25			£
Junior (0-5y)	free			£

## Rooms

Rooms will be allocated on a first-come, first-served basis. Juniors, if in a separate room, will be in proximity to their adult/s. Full weekend bookings will be given priority. The ground floor rooms are intended for those with specific needs.

\*Sole occupancy of a twin room requires a surcharge of £5 pppn

\*Please note preferred room number/type/floor/colour zone \* See Rooms map

Preference 1	
Preference 2	
Camping interest?	Yes/No